

**BORING NO. B-7**  
**CRL STA. 587+81**  
**20' RT.**

WATER LEVEL CHECK: 2.8 FT.  
 (4/5/2015)

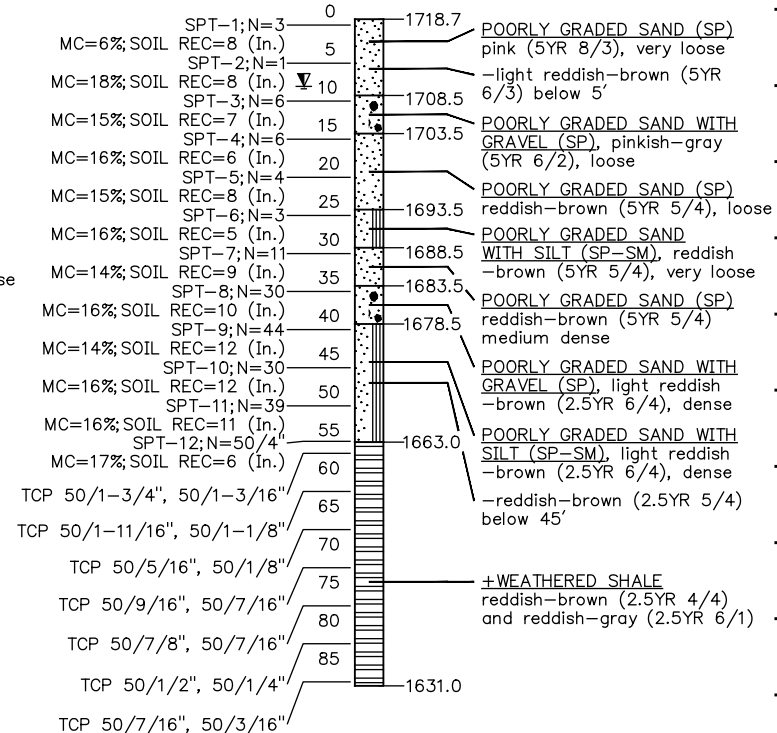
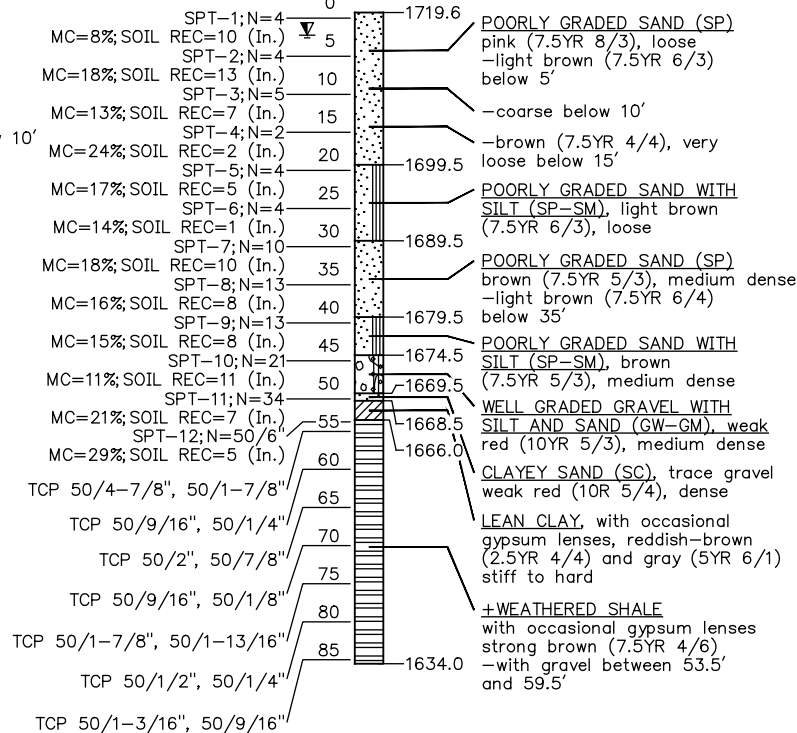
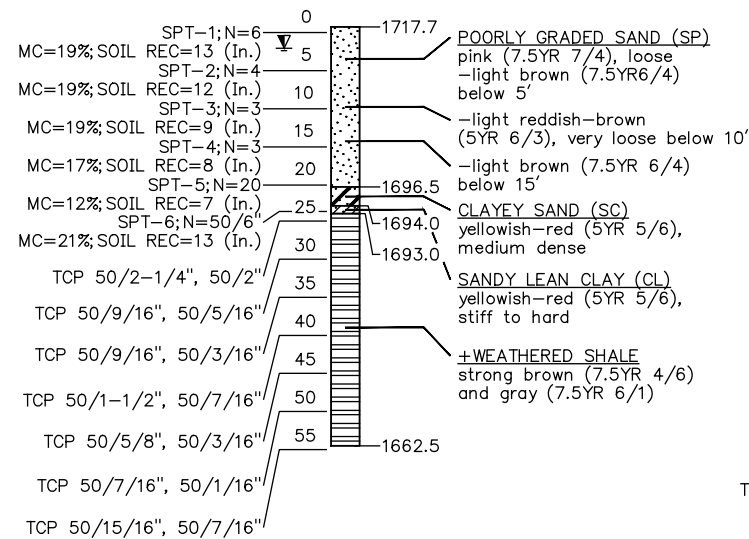
**BORING NO. B-8**  
**CRL STA. 588+81**  
**16' LT.**

WATER LEVEL CHECK: 3.0 FT.  
 (4/7/2015)

**BORING NO. B-9**  
**CRL STA. 589+75**  
**20' RT.**

WATER LEVEL CHECK: 8.8 FT.  
 (4/8/2015)

1750  
1740  
1730  
1720  
1710  
1700  
1690  
1680  
1670  
1660  
1650  
1640  
1630  
1620  
1610



1750  
1740  
1730  
1720  
1710  
1700  
1690  
1680  
1670  
1660  
1650  
1640  
1630  
1620  
1610

**GEOLOGY:**

THE GEOLOGY OF THIS SITE CONSISTS OF DOG CREEK UNIT OF PERMIAN AGE. THE DOG CREEK UNIT CONSISTS DOMINANTLY OF SALTY, REDDISH-BROWN, BLOCKY CLAY-SHALE WITH MINOR AMOUNT OF GYPSUM AND DOLOMITE PRESENT IN BEDS LESS THAN 2 FEET THICK. THE TOTAL THICKNESS OF THE UNIT VARIES FROM 157 TO 190 FEET ON THE NORTH FLANK OF THE ANADARKO BASIN IN BLAINE COUNTY. ON THE SOUTH FLANK OF THE BASIN, THE THICKNESS VARIES FROM 120 TO 220 FEET. IT THEN THINS TO ABOUT 80 FEET IN NORTHERN GREER AND NORTHERN HARMON COUNTIES WHERE IT overlies THE WICHITA MOUNTAIN UPLIFT. SOUTHWARD, IT THICKENS TO A MAXIMUM OF 180 FEET NEAR THE CENTER OF THE HOLLIS BASIN IN CENTRAL HARMON COUNTY.

NOTE: GROUNDWATER LEVELS WERE OBTAINED DURING THE DRILLING OPERATIONS, AND MAY FLUCTUATE THROUGHOUT THE YEAR.

▽ WATER LEVEL +24 HOURS AFTER DRILLING

NOTES: FOR ADDITIONAL TESTING INFORMATION, SEE THE GEOTECHNICAL ENGINEERING REPORT.

BORING LOCATIONS (STATIONS) ARE NOT TO SCALE HORIZONTALLY.

**FOUNDATION REPORT**  
 (SHEET 3 OF 4)  
 BRIDGE "A" C.R.L. STA. 586+80.46

State Job No. 28768(04) Sheet No. 37